

# COLOURTEX

## Performance Fabrics

### SOLAR, OPTICAL AND COLOUR FASTNESS PROPERTIES

COLOURTEX	SOLAR, OPTICAL PERFORMANCE CHART													
	SOLAR			OPTICAL			SC	CF	DIM out	UV block	SG	G TOT		
T <sub>s</sub>	R <sub>s</sub>	A <sub>s</sub>	T <sub>0</sub>	R <sub>0</sub>	A <sub>0</sub>	DG						TG	DG LE	
Almond	12	74	14	8	79	13	0.29	6+	3	100	0.239	0.269	0.296	0.334
Ash	8	60	32	1	50	49	0.42	6+	3	100	0.316	0.349	0.368	0.409
Azure	6	38	56	0	15	85	0.63	6+	4	100	0.416	0.451	0.453	0.504
Berry	12	38	50	0	13	50	0.63	6+	4	100	0.441	0.464	0.461	0.509
Biscuit	10	66	24	3	65	32	0.36	6+	3	100	0.280	0.313	0.336	0.375
Brownie	8	50	42	0	35	65	0.52	6+	4	100	0.368	0.400	0.411	0.455
Chocolate	13	33	54	0	7	93	0.68	6+	4	100	0.467	0.490	0.482	0.533
Cornflower	8	61	31	3	65	32	0.41	6+	3	100	0.309	0.341	0.360	0.403
Forest	11	35	54	0	14	86	0.66	6+	4	100	0.459	0.485	0.477	0.529
Granite	11	31	58	0	6	94	0.70	6+	4	100	0.476	0.499	0.489	0.542
Toffee	8	60	32	1	53	46	0.42	6+	3	100	0.317	0.350	0.669	0.410
White	12	80	8	10	89	1	0.23	6+	3	100	0.202	0.232	0.261	0.301

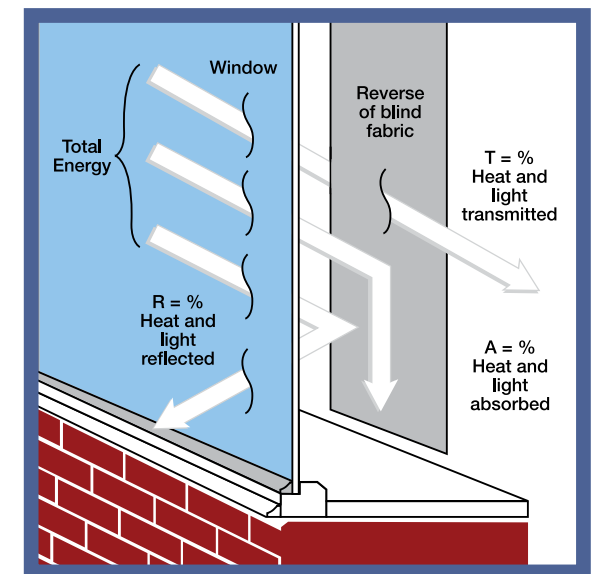
T: % Transmittance R: % Reflectance A: % Absorption SC: Shading Co-efficient CF: Colour Fastness Dim out: 1= High light penetration, 4= Low light penetration, 5= Blackout UV Block: the percentage of UV light blocked by the fabric GTOT: SG = Single Glazed, DG = Double Glazed, TG = Triple Glazed, DG LE = Double Glazed Low Emissivity.

#### SHADING CO-EFFICIENT

The solar heat gain with the blind at the window divided by the solar heat gain with no blind at the window. The lower the shading co-efficient, therefore, the higher the efficiency of the fabric. The test results in the table above have been achieved using a single 6mm glass glazing system.

#### G TOT

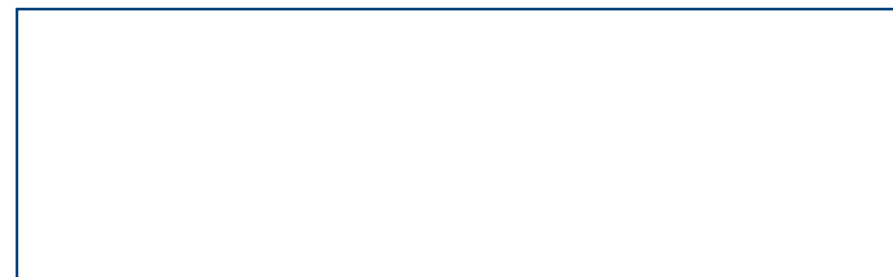
A measure of total solar energy that passes through the glazing system and the blind fabric.



#### FIRE PROTECTION

Colourtex meets FR standard BS 5867 Part 2 Type B. Further information is available on request.

Blinds with Louvolite® Performance fabrics supplied by:



CI/SfB 1976 reference by SfB Agency			
(76.7)	X		



# A10

# COLOURTEX

Performance Fabrics



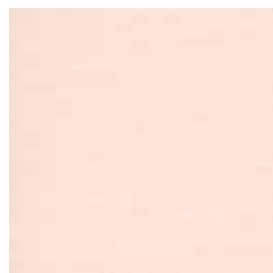
White



Ash



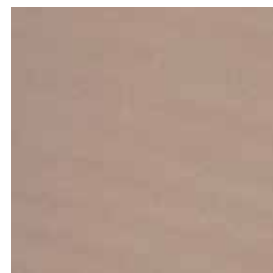
Granite



Almond



Toffee



Brownie



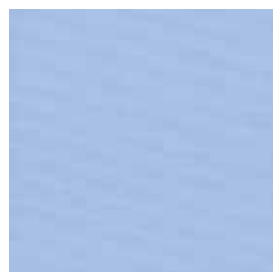
Biscuit



Chocolate



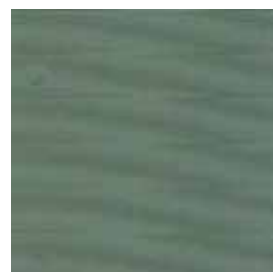
Berry



Cornflower



Azure



Forest



Vertical Blind



Roller Blind



Roman Blind



Panel Blind



Flame Retardant



Dim Out



Wipe Clean



Greenshield



<b>Colour Range</b>	12	<b>Greenshield</b>	Fabrics featuring the Greenshield mark have been tested to confirm no harmful VOC's or hazardous substances will be released to the environment in quantities that are recognised as potentially dangerous to occupants of dwellings or buildings.
<b>Louvre Widths Available</b>	89mm (3½") 127mm (5") other widths available on request		
<b>Fabric Width</b>	2.10m (82")		
<b>Fabric Composition</b>	100% Polyester	<b>Cleaning</b>	Wipe clean
<b>Fabric Weights</b>	275g/m <sup>2</sup> (8.1oz/yd <sup>2</sup> )	<b>Availability</b>	Ex-stock
<b>Flammability Standards</b>	Complies with BS 5867 (Part 2, Type B)	<b>Fabric Samples</b>	Available on request
<b>Colour Fastness</b>	Tested in accordance with BS EN ISO 105-B01:1999		

Colours reproduced here may vary from the actual colours due to the limitations of the printing process. Great care has been taken to ensure that the fabric swatches and the information supplied are correct, however specifiers and customers are advised to check the suitability of materials before use.